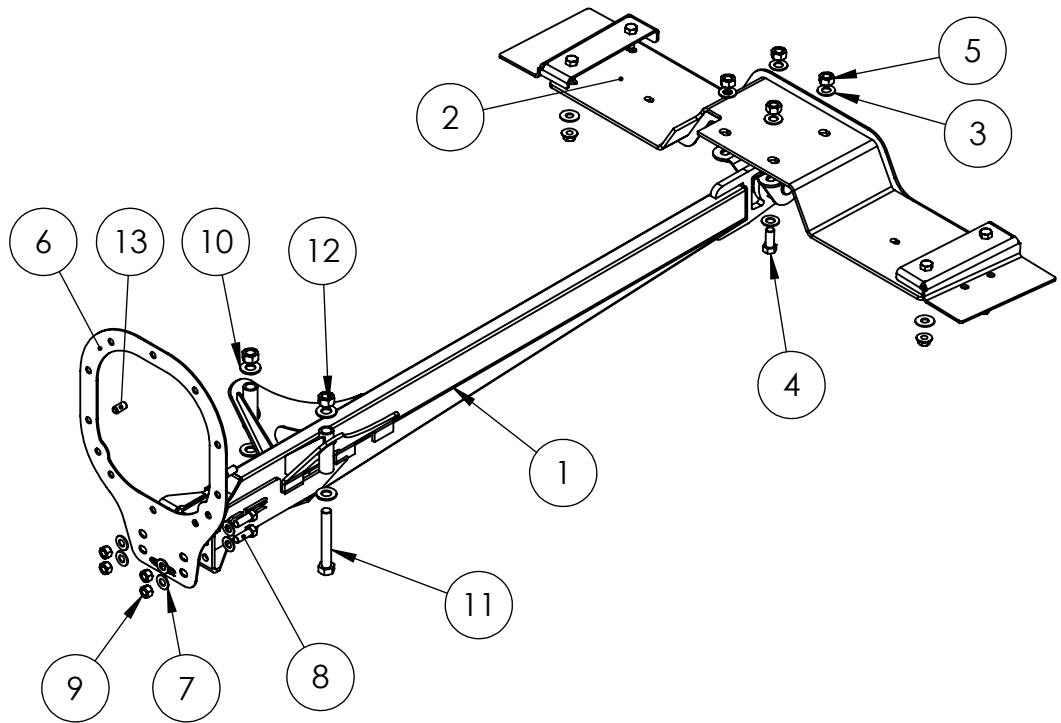


ITEM NO.	PART NUMBER	DESCRIPTION	QTY.
1	MTA 6100 C	Complete Assembly as Shipped	1
2	MTA 6200 Rev3	Cross Member, Complete, S197 TorqueArms	1
3	Preferred Narrow FW 0.4375		8
4	HBOLT 0.4375-20x1x1-N		4
5	HNUT 0.4375-20-D-N		4
6	MTA 1301_Rev5	Steel TA 8.8 Diff. Mnt. Plate	1
7	Preferred Narrow FW 0.375		8
8	HBOLT 0.3750-24x1x1-N		4
9	HNUT 0.3750-24-D-N		4
10	Preferred Narrow FW 0.5		4
11	HBOLT 0.5000-20x3.5x1.25-N		2
12	HNUT 0.5000-20-D-N		2
13	DPM 0.375x0.75		2



COMMENTS:

**PROPRIETARY AND CONFIDENTIAL**  
 THE INFORMATION CONTAINED IN THIS DRAWING IS THE SOLE PROPERTY OF GRIGGS RACING PRODUCTS, INC. ANY REPRODUCTION IN PART OR AS A WHOLE WITHOUT THE WRITTEN PERMISSION OF GRIGGS RACING PRODUCTS, INC. IS PROHIBITED.

		DIMENSIONS ARE IN INCHES TOLERANCES: FRACTIONAL $\pm 1/16"$ ANGULAR: MACH $\pm 1/8^\circ$ BEND $\pm 1/2^\circ$ TWO PLACE DECIMAL $\pm .05$ THREE PLACE DECIMAL $\pm .005$ MATERIAL		NAME	DATE	griggs racing products 21750 8th St E, Sonoma, CA 95476
				DRAWN	PR	
				CHECKED		Torque Arm Kit With Removable Diff Plate
				ENG APPR.		
				MFG APPR.		
				Q.A.		
				FINISH	Plain	
				DO NOT SCALE DRAWING		SIZE A
						DWG. NO. <b>MTA 6000 C</b>
						REV. -
						SCALE:1:10
						WEIGHT:
						SHEET 1 OF 3

Fastener Torque	Ft-Lbs
3/8"-24 SAE	38-42
7/16-20 SAE	55-65

**FIRST**

- 1) LOOSELY ASSEMBLE CROSSMEMBER.
- 2) POSITION ON TWO EXISTING 8MM STUDS IN FLOOR
- 3) WELD BRACKETS SECURELY TO FRAME RAIL

**SECOND**

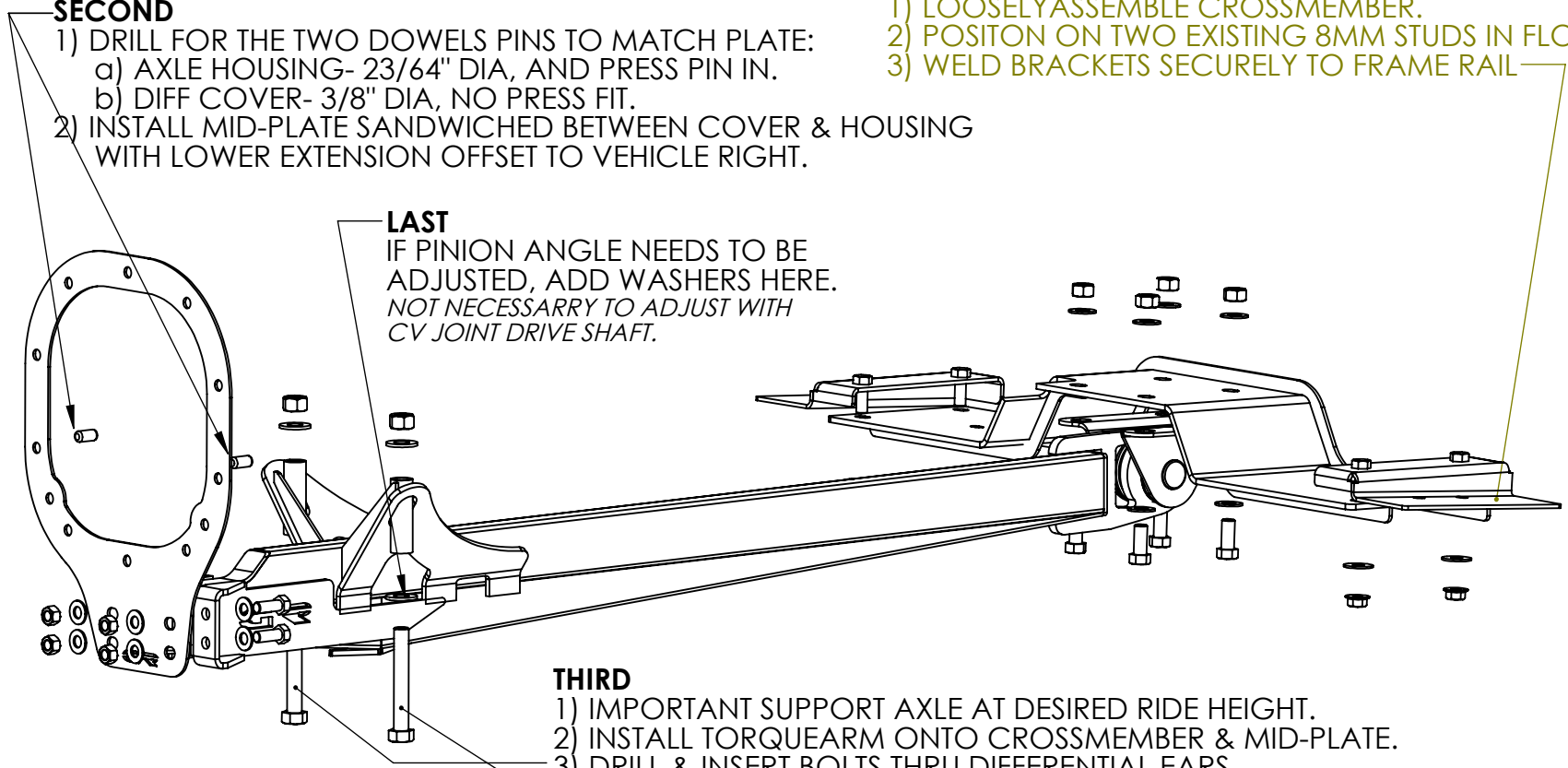
- 1) DRILL FOR THE TWO DOWEL PINS TO MATCH PLATE:
  - a) AXLE HOUSING- 23/64" DIA, AND PRESS PIN IN.
  - b) DIFF COVER- 3/8" DIA, NO PRESS FIT.
- 2) INSTALL MID-PLATE SANDWICHED BETWEEN COVER & HOUSING WITH LOWER EXTENSION OFFSET TO VEHICLE RIGHT.

**LAST**

IF PINION ANGLE NEEDS TO BE ADJUSTED, ADD WASHERS HERE.  
 NOT NECESSARY TO ADJUST WITH CV JOINT DRIVE SHAFT.

**THIRD**

- 1) IMPORTANT SUPPORT AXLE AT DESIRED RIDE HEIGHT.
- 2) INSTALL TORQUEARM ONTO CROSSMEMBER & MID-PLATE.
- 3) DRILL & INSERT BOLTS THRU DIFFERENTIAL EARS.
- 4) TORQUE ALL FASTENERS.
- 5) REFILL AXLE.



**PROPRIETARY AND CONFIDENTIAL**  
 THE INFORMATION CONTAINED IN THIS DRAWING IS THE SOLE PROPERTY OF GRIGGS RACING PRODUCTS, INC. ANY REPRODUCTION IN PART OR AS A WHOLE WITHOUT THE WRITTEN PERMISSION OF GRIGGS RACING PRODUCTS, INC. IS PROHIBITED.

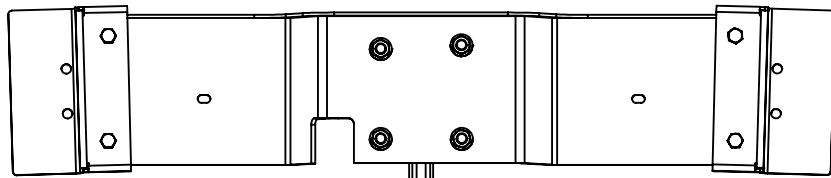
DIMENSIONS ARE IN INCHES		NAME	DATE
TOLERANCES:		DRAWN	PR 8/18/2017
FRACTIONAL ± 1/16"		CHECKED	
ANGULAR: MACH ± 1/8°		ENG APPR.	
BEND ± 1/2°		MFG APPR.	
TWO PLACE DECIMAL ± .05		Q.A.	
THREE PLACE DECIMAL ± .005		FINISH	Plain
MATERIAL		DO NOT SCALE DRAWING	
NEXT ASSY	USED ON		
APPLICATION			

**griggs racing products**  
 21750 8th St E,  
 Sonoma, CA 95476

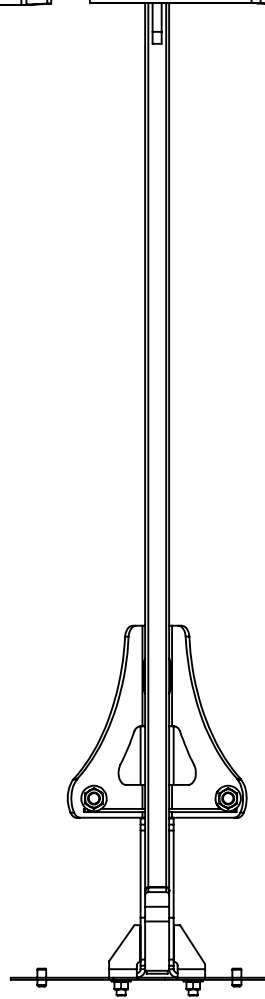
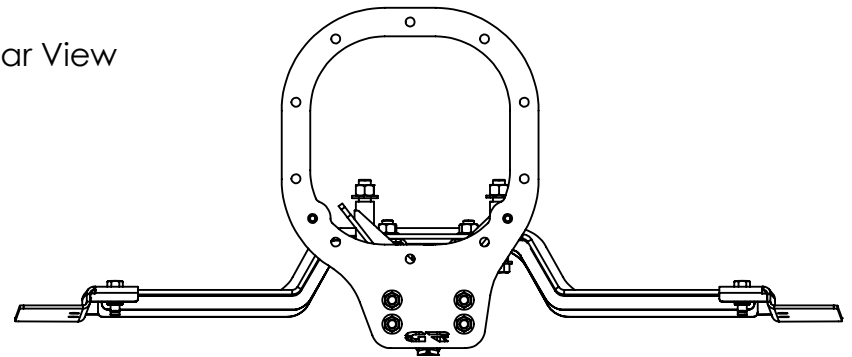
**TorqueArm Kit  
 w/ Mid-Plate  
 Installation.**

SIZE	DWG. NO.	REV.
<b>A</b>	<b>MTA 6000 C</b>	<b>-</b>
SCALE: 1:6	WEIGHT:	SHEET 2 OF 3

COMMENTS:



Rear View



UNLESS OTHERWISE SPECIFIED:		NAME	DATE	<b>griggs racing</b> 21750 8th St East #C Sonoma, CA 95476  <b>Complete TorqueArms Assembly Kit</b>		
DIMENSIONS ARE IN INCHES		DRAWN	BG			06/26/15
TOLERANCES:		CHECKED				
FRACTIONAL ±1/16		ENG APPR.				
ANGULAR: MACH ±.05 BEND ±.1		MFG APPR.				
TWO PLACE DECIMAL ±.05		Q.A.				
THREE PLACE DECIMAL ±.005		COMMENTS:				
INTERPRET GEOMETRIC TOLERANCING PER:				SIZE	DWG. NO.	
MATERIAL				<b>A</b>	MTA 6000 C	
FINISH: PLAIN, or OPTIONAL PC GRAY HAMMER				SCALE: 1:8	WEIGHT: 6.25lbs	
DO NOT SCALE DRAWING				SHEET 3 OF 3	REV	

<b>PROPRIETARY AND CONFIDENTIAL</b> THE INFORMATION CONTAINED IN THIS DRAWING IS THE SOLE PROPERTY OF <INSERT COMPANY NAME HERE>. ANY REPRODUCTION IN PART OR AS A WHOLE WITHOUT THE WRITTEN PERMISSION OF <INSERT COMPANY NAME HERE> IS PROHIBITED.	NEXT ASSY	USED ON
	APPLICATION:	

5

4

3

2

1